

I. Introduction

The Greater Los Angeles County Region (Region) encompasses many diverse communities. Many of those communities include substantial areas that meet the definition of Disadvantaged Communities (DACs) as illustrated in Figures 12-1 to 12-4 from Section 2 of the Greater Los Angeles County IRWM Plan. Many of these DACs have critical water supply and water quality needs that the Greater Los Angeles County IRWM looks to address through the planning and project implementation activities undertaken as a region and included as part of this application. While most of the projects in this proposal have benefits that help both DACs and non-DACs communities, the Region elected to highlight two projects in particular. Those projects would benefit DACs by helping to address critical water supply needs and provide other benefits to improve the local area and create new recreational opportunities near the project. The two projects identified as contributing directly to meeting the program preference for addressing critical water supply or water quality needs in a disadvantaged community were the Hahamongna Basin Multi-Use Project and the Tujunga Spreading Grounds Enhancement Project. Figure 12-5 shows the location of these Disadvantaged Community Projects.

Figure 12-1.

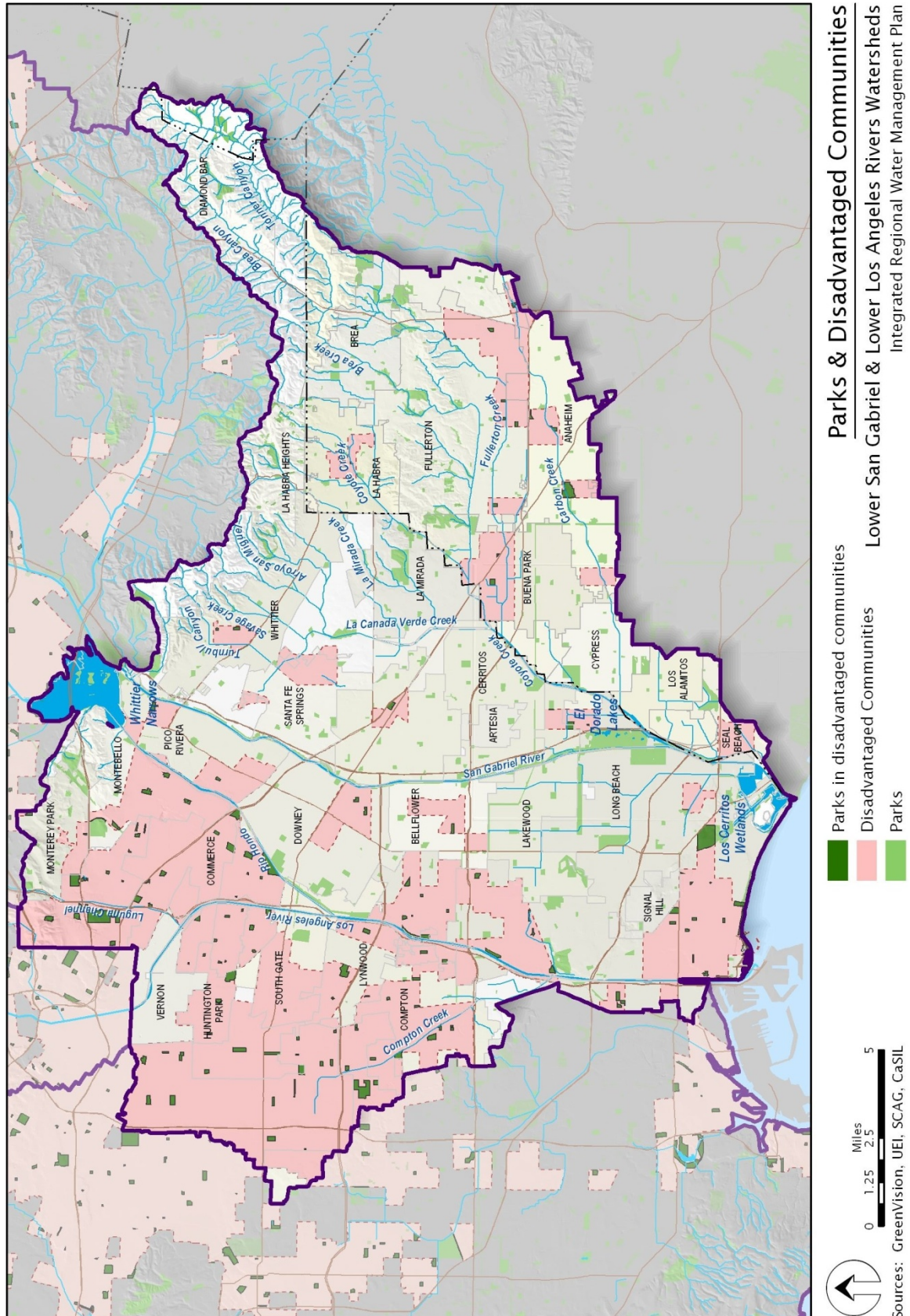
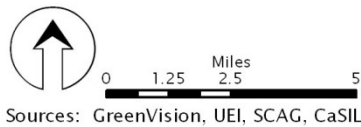
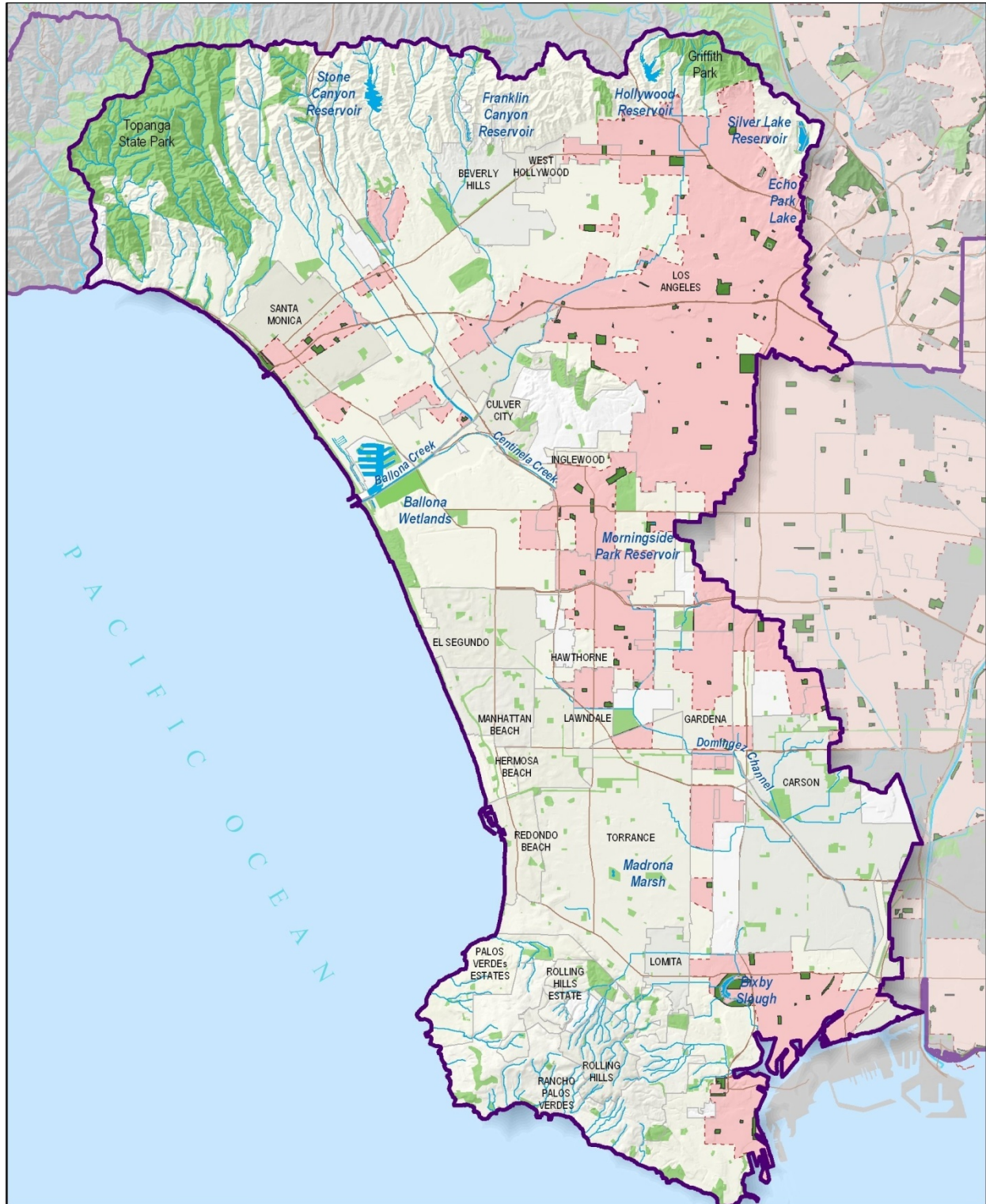


Figure 12-2.



-  Parks in disadvantaged communities
-  Disadvantaged Communities
-  Parks

Parks & Disadvantaged Communities
South Bay Watersheds
Integrated Regional Water Management Plan

Disadvantaged Community Assistance

Figure 12-3.

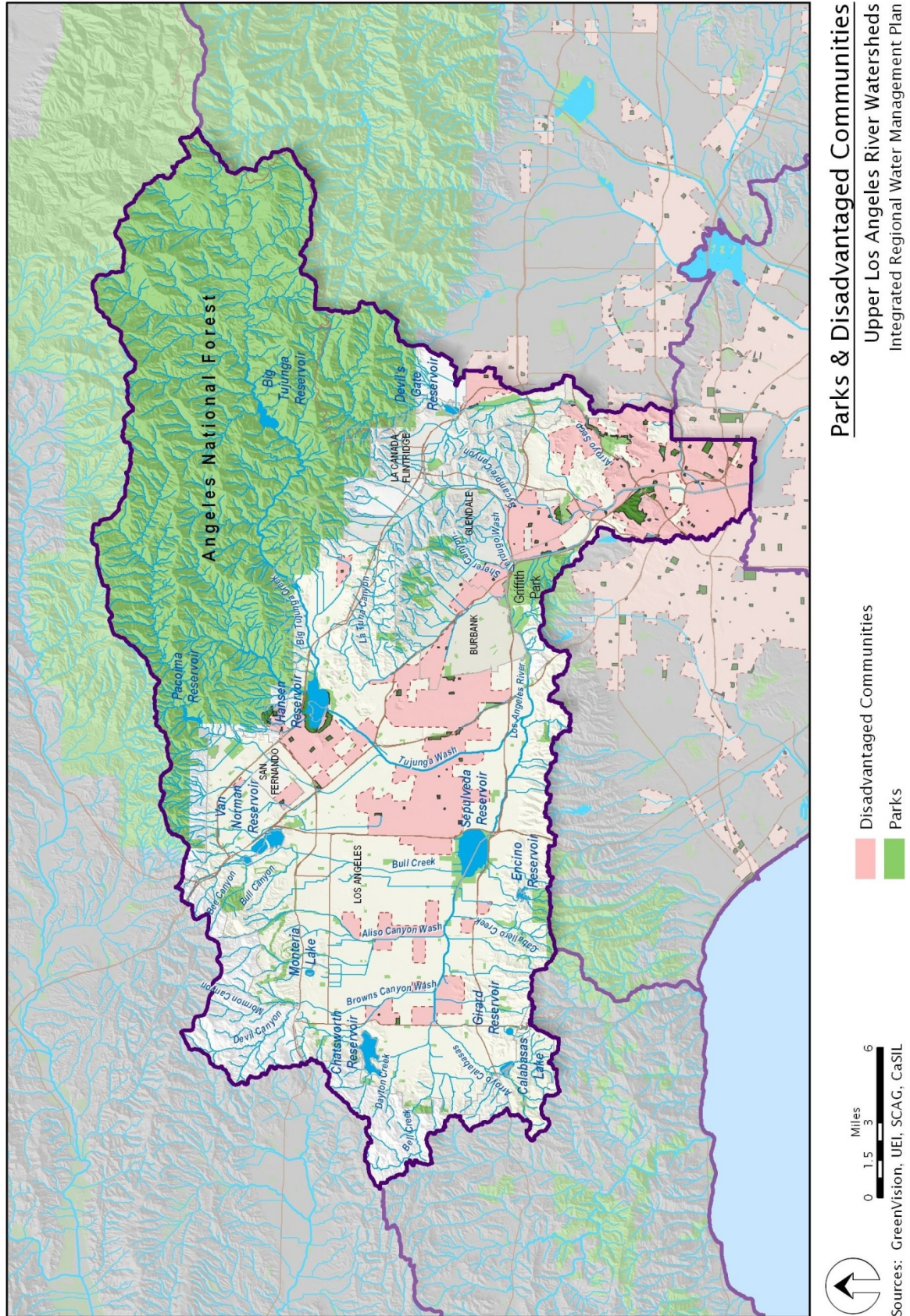


Figure 12-4.

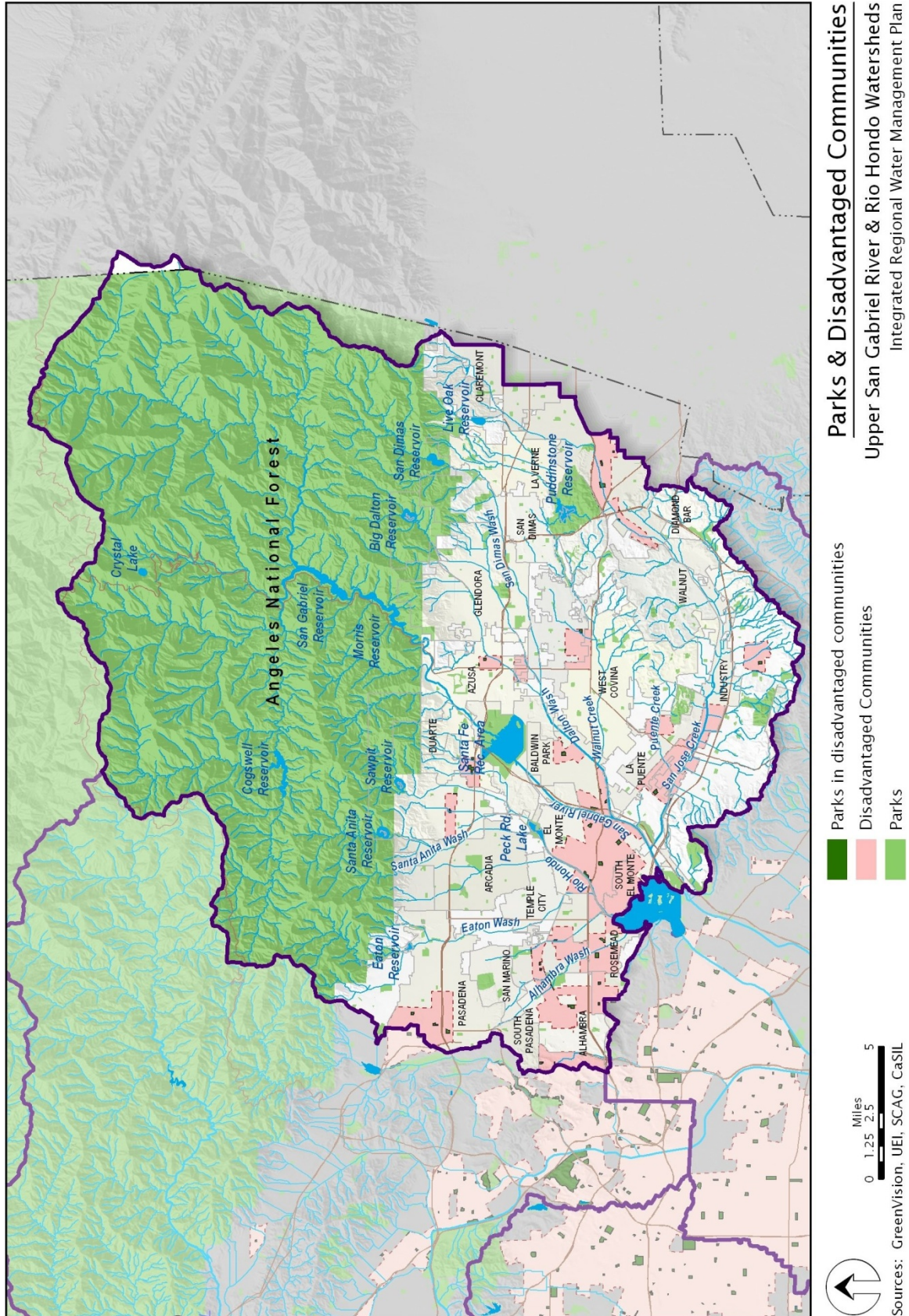
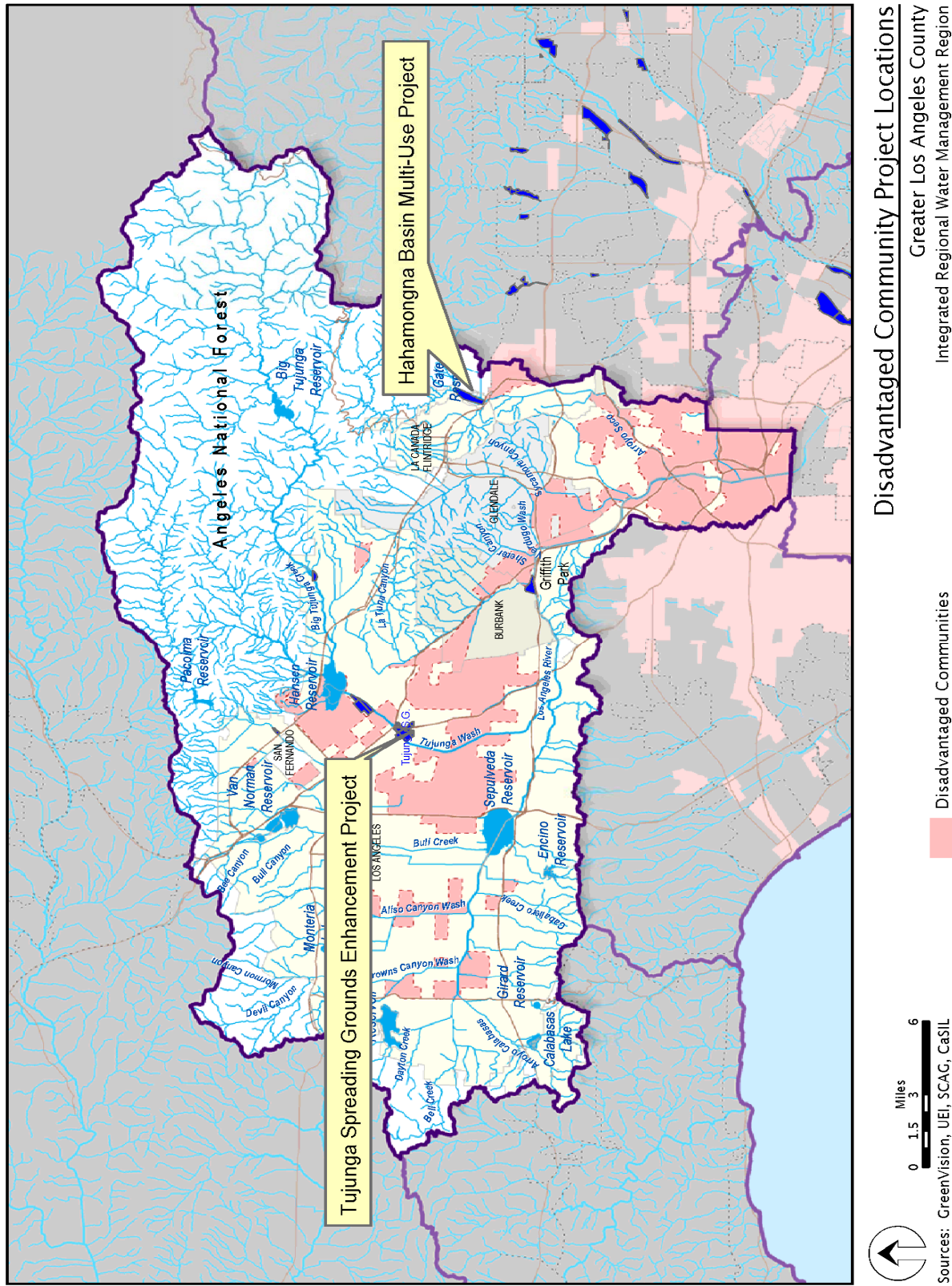


Figure 12-5.

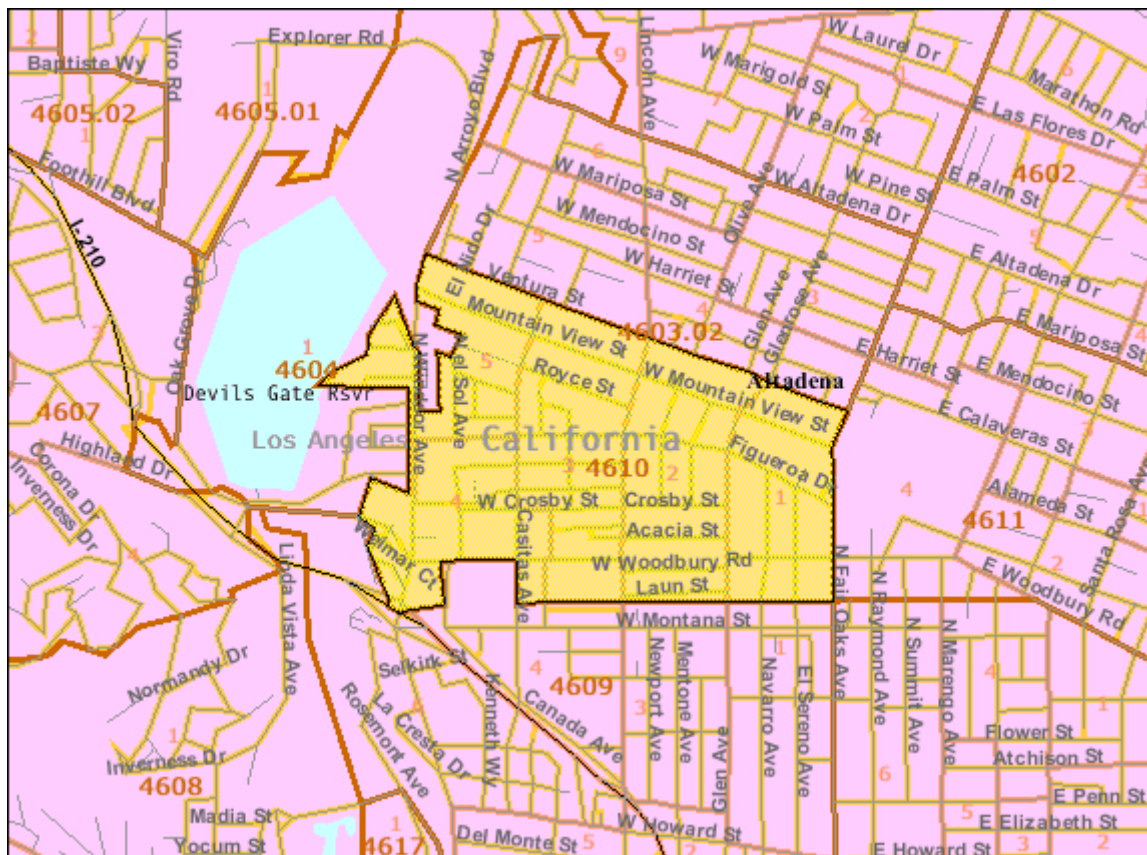


II. Hahamongna Basin Multi-Use Project – Arroyo Seco Foundation

Documentation of the Presence and Needs of DACs

The Hahamongna Basin Multi-Use Project is adjacent to DACs in US Census Tracts 4610 including DAC Tract Numbers 409, 411, 414, 418, 491, 493, and 509 that covers households at or below 80 percent of the median household income. The DACs adjacent to the project are illustrated in Figure 12-6 below. These neighborhoods are served by small mutual water companies and the Pasadena Department of Water & Power that bring in water supply to offset the local water supply that was lost when groundwater contamination led to the shut down of the local wells. The local water supply is affected by the Hahamongna Superfund site which impairs the groundwater quality and is limited in supply by the current basin configuration which reduces the amount of water that can be percolated into the basin. The Multi-Use Project will augment the ongoing Superfund Clean Up Project which includes a groundwater treatment plant to address the critical need in the local DACs for a reliable and clean source of water supply.

Figure 12-6. Project Area and Adjacent DACs



Note: Disadvantaged Community shown in yellow.

Description of Proposed Project and Targeted Benefits to DACs

The Multi-Use Project's primary goal in regards to African-American, Senior Citizens and Hispanic Populations that make up the DACs in US Census Tracts 4610 is to create a stable and reliable local water source for the local water suppliers of the adjacent DACs. Through these efforts the DACs will not only receive the long-term benefit of a local water supply, but will see greater stability in the water rates for local users as well as lower water rates in relation to the cost of imported water. The post-construction operation and maintenance costs for this project will be managed and funded by the City of Pasadena in cooperation with the Los Angeles County Flood Control District. These efforts will be supplemented by ongoing habitat restoration, educational outreach and community awareness managed by the Arroyo Seco Foundation. Studies and collaborative activities are already tracking potential success for increased reliable local water supply.

Beyond the water supply benefits produced by the project, there will also be accompanying expanded recreational opportunities for the surrounding DACs communities through completion of the project. To achieve these goals, the current collaborative and successful job training/nature education programs with Arroyo Seco Foundation, Muir High School Environmental Magnet Program and Outward Bound will be integrated into a future Watershed Education Center. The Watershed Education Center will coordinate programming once the projects in the Hahamongna Basin are completed. The programs and ecosystem restoration work will open new job opportunities for DAC youth in urban nature/forestry activities in the target area.

Documentation of DAC Representation and Participation

The City of Pasadena Hahamongna Advisory Commission meets on a regular basis to consider general and DAC concerns, including public comment from the community. The agenda and minutes are always posted for public review and information on the City of Pasadena Website (<http://ww2.cityofpasadena.net/publicworks/PNR/ArroyoSeco/annex.asp>). Pasadena Water & Power, in cooperation with the Foothill Municipal Water District, have conducted a number of community outreach programs on water quality and water conservation techniques and free resources to water users.

In addition to the regularly scheduled Hahamongna Advisory Commission meetings, the Arroyo Seco Foundation (ASF) conducted a number of outdoor educational activities and field trips with disadvantaged youth from the area's DAC to explain how the Hahamongna Watershed Basin operates and the importance of local water source reliability. ASF also undertook an arts mural campaign with local students in Northwest Pasadena, in cooperation with the City of

Pasadena, helping the students create cultural murals along Lincoln Avenue near the watershed. These programs were conducted through ASF's 2008-2009 Bilingual Watershed Coordination Program. The ASF conducted a number of disadvantaged youth educational and outreach projects within the target area through its Stream Team program (<http://www.arroyoseco.org/waterquality.htm>). The Arroyo Seco Foundation received significant funding from the Resources Legacy Fund for the development of an outreach program to disadvantaged youth and Outward Bound received significant funding from US Forest Service for a similar program focused on building leadership skills.

Further, numerous community meetings were held in conjunction with the JPL clean-up where significant work has already been completed on the JPL Superfund Cleanup and water treatment plant construction.

DAC members will continue to be engaged in the Hahamongna Basin Multi-Use Project that spans beyond this first phase. This includes training and active participation in water quality testing, youth recreational activities in the basin, and watershed management programs emanating out of the Hahamongna's Watershed Nature Center. Included in this attachment is a letter of support from Outward Bound who works with providing opportunities and learning experiences for the youth in the adjacent DAC communities.

Outward Bound Adventures



TO WHOM IT MAY CONCERN:

Outward Bound Adventures (OBA) is pleased to provide this letter in support of the Arroyo Seco Foundation-City of Pasadena Hahamongna Multi-Use Project Proposition 84 grant application and the positive contributions it will make to the disadvantaged communities both adjacent to the Hahamongna Watershed Park and to the water users who rely on it as a groundwater drinking source.

For almost 50 years, OBA has run outdoor educational programs for the youth of Pasadena and surrounding communities, and our projects include a number of environmental stewardship efforts, including water quality sampling and testing in the Hahamongna.

Successful funding of the Hahamongna Multi-Use Project Proposition 84 Grant will go far in improving both groundwater storage and groundwater quality for our local residents who reside in our lower income communities. In addition, the trail and ecosystem restoration components of this project will enhance both recreational opportunities for local residents as well as provide increased environmental leadership opportunities for the students we serve.

We strongly urge your funding support of the Hahamongna Multi-Use Project.

Please feel free to contact me if you have any questions.

Sincerely,

A handwritten signature in black ink, appearing to read "Charles Thomas". The signature is fluid and cursive, written over a white background.

Charles Thomas
Executive Director

Outward Bound Adventures P.O. Box 202 Pasadena, CA 91101
Ph: 626.564.0844 Fax: 626.564.0904
www.obainc.org

III. Tujunga Spreading Grounds Enhancement Project – Los Angeles Department of Water and Power

Documentation of the Presence and Needs of DACs

The Tujunga Spreading Grounds Enhancement Project is adjacent to DACs in the neighborhoods of Arleta, Sun Valley, Panorama City, and Pacoima that covers households at or below 80 percent of the median household income based on 2000 Census Data as shown in Figure 12-7. The DAC receives a portion of its potable water from imported sources making the community vulnerable to imported water restrictions, such as reduced pumping on the Bay-Delta System. The local watershed is a tributary to the Los Angeles River, which is 303(d) listed as an impaired water body and many of these communities also lack streets storm drains and other related infrastructure to safely treat and convey polluted stormwater runoff. Due to the density of development and industrial facilities, the neighborhoods surrounding this project lack open and green space.

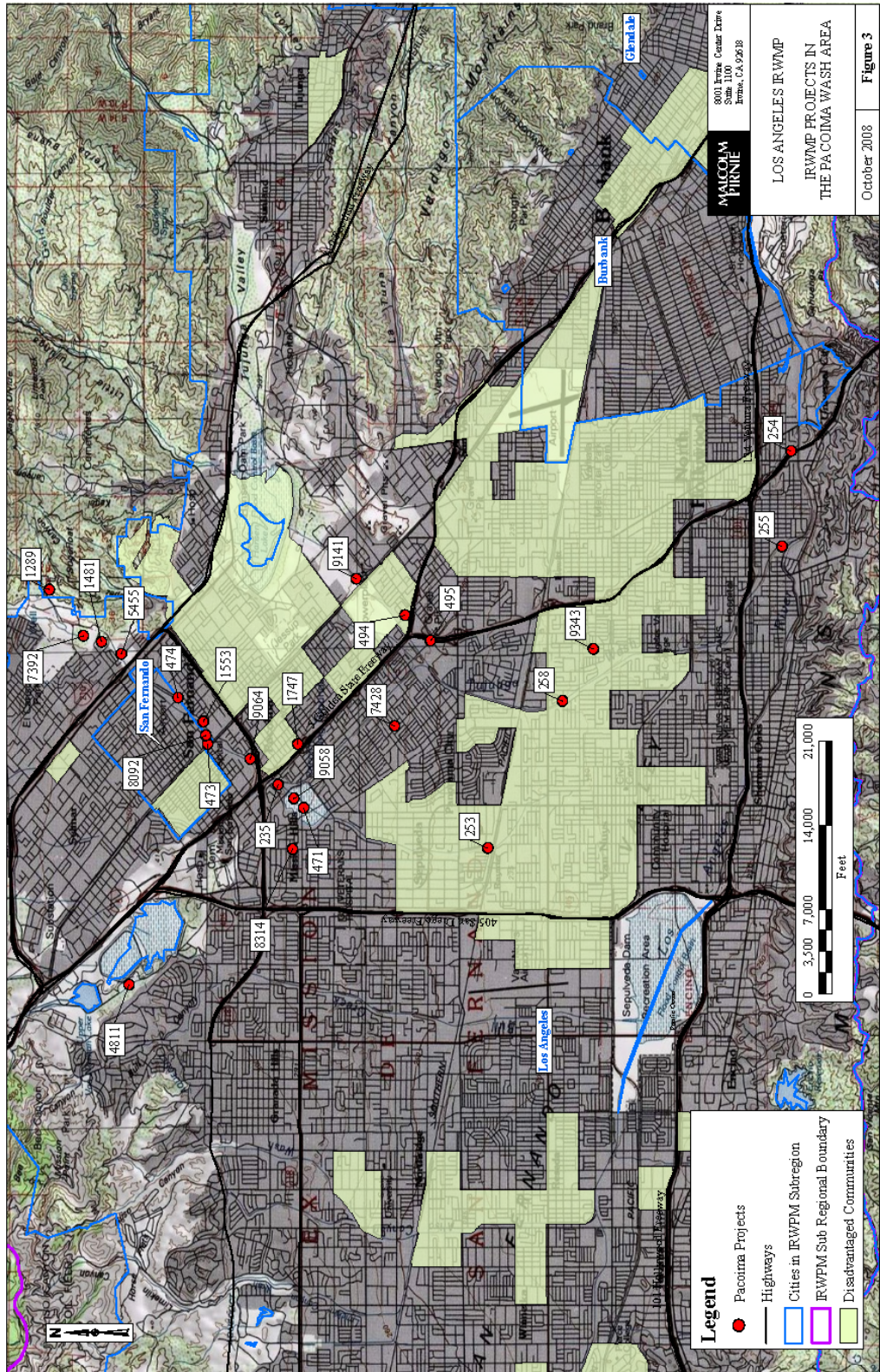
Description of Proposed Project and Targeted Benefits to DACs

The Project will help address the water supply and water quality needs of the adjacent DACs through the ability to capture and infiltrate additional stormwater into the San Fernando Valley Groundwater Basin to augment and increase the local supply of groundwater for use as a local water supply source. The increased diversions of stormwater will help reduce the downstream water quality impacts to impaired water bodies.

The Project will also bring much needed passive recreation along with open space attributes the entire community can enjoy. The project proposes to incorporate educational signage for the public to learn and understand the various water supply resources as well as learn about the surrounding native ecology. The proposed walking trail enhancements will link the proposed Cesar Chavez Park across Sheldon Street to the entire Tujunga Spreading Grounds facility, therefore, creating an increased health benefit.

Realization of multiple project benefits is very likely since the Tujunga Spreading Grounds plays a pivotal role as a water resource for the City and will therefore be designed for efficiency and longevity. The maintenance of the open space will occur concurrently with maintenance of the spreading basins through a cooperative agreement between the Los Angeles Department of Water and Power, Los Angeles County Flood Control District, and City of Los Angeles Department of Recreation and Parks.

Figure 12-7. Project Area and Adjacent DACs



Documentation of DAC Representation and Participation

The DAC adjacent to the Project are represented by Council District 6, within the City of Los Angeles. Multiple scoping meetings were held both at City Hall and at the Council District Field Office to understand the needs of the community. The council office effectively communicated the enhancements that would most benefit their community. These meetings with the Council District allowed for the project's technical details to be thoroughly explained and reviewed with series of scoping meetings to the leaders of the DACs. As a result of these meetings, several hydraulic changes were made to the design to accommodate community input and aesthetic preferences.

As the project moves forward, meetings will continue to be conducted with the Council District including community meetings to provide the Project status and gather feedback from the community members. Included in this attachment is a letter of support from TreePeople, Metropolitan Water District of Southern California, and County of Los Angeles, Department of Public Works.



March 3, 2010

The Honorable Howard L. Berman
United States House of Representatives
2221 Rayburn House Office Building
Washington, D.C. 20515

Dear Congressman Berman:

This letter is in support of the Congressional Appropriations request submitted by Los Angeles Mayor Antonio R. Villaraigosa and entitled "Tujunga Spreading Grounds Enhancement Project."

This project would increase stormwater capture from the Tujunga Wash and provide for additional recharge to the San Fernando Valley groundwater basin of up to 8,000 acre-feet of water per year, which is enough to service 16,000 households. This increase in the availability of local ground water will help reduce the City of Los Angeles' reliance on imported water, moving the City towards a more sustainable water supply. The project will also improve flood protection, increase downstream water quality, and create open space and passive recreational and educational opportunities to benefit the local community.

TreePeople supports this project and believes that it will benefit residents of both the local community and the greater Los Angeles area.

Thank you for your consideration of this important project.

Sincerely,

A handwritten signature in black ink that reads "Andy Lipkis".

Andy Lipkis
Founder and President
TreePeople

12601 MULHOLLAND DRIVE BEVERLY HILLS CA 90210 TEL 818 753-4600 FAX 818 753-4635 WWW.TREEPEOPLE.ORG

Printed with soy ink on chlorine-free, acid-free 100% post-consumer recycled paper



THE METROPOLITAN WATER DISTRICT
OF SOUTHERN CALIFORNIA

Office of the General Manager

March 3, 2010

Mayor Antonio R. Villaraigosa
City of Los Angeles
200 North Spring Street
Los Angeles, CA 90012

Dear Mayor Villaraigosa:

The Metropolitan Water District is pleased to support the Congressional Appropriations request submitted by the City of Los Angeles for the Tujunga Spreading Grounds Enhancement Project.

This project would increase stormwater capture from the Tujunga Wash and provide for additional recharge to the San Fernando Valley groundwater basin of up to 8,000 acre-feet of water per year, which is enough to service 16,000 households. This increase in the availability of ground water will help reduce the City of Los Angeles' reliance on imported water.

The Metropolitan Water District of Southern California provides its twenty six member agencies in Southern California, including the City of Los Angeles, with imported water from the State Water Project and the Colorado River. In this time of statewide drought conditions and restricted water supplies, we must all be effective stewards of all of our water resources. Metropolitan believes that this project, by augmenting regional water supplies, will benefit residents and businesses throughout Southern California.

Metropolitan is pleased to support this important project.

Sincerely,

A handwritten signature in black ink, appearing to read "Jeffrey Kientzinger".

Jeffrey Kientzinger
General Manager

cc: S. David Freeman



GAIL FARBER, Director

COUNTY OF LOS ANGELES

DEPARTMENT OF PUBLIC WORKS

"To Enrich Lives Through Effective and Caring Service"

900 SOUTH FREMONT AVENUE
ALHAMBRA, CALIFORNIA 91803-1331
Telephone: (626) 458-5100
<http://dpw.lacounty.gov>

ADDRESS ALL CORRESPONDENCE TO:
P.O. BOX 1460
ALHAMBRA, CALIFORNIA 91802-1460

March 4, 2010

IN REPLY PLEASE
REFER TO FILE: **WR-5**

The Honorable Howard L. Berman
House of Representatives
2221 Rayburn House Office Building
Washington, D.C. 20515

Dear Representative Berman:

LETTER OF SUPPORT TUJUNGA SPREADING GROUNDS ENHANCEMENT PROJECT

This letter is in support of the Congressional Appropriations request submitted by the City of Los Angeles for the Tujunga Spreading Grounds Enhancement Project.

The Tujunga Spreading Grounds Enhancement Project would increase stormwater capture from Tujunga Wash, the largest tributary of the Los Angeles River. The project will also create open space and passive recreational and educational opportunities, and recharge local groundwater supplies to help alleviate the region's reliance on imported water.

The County of Los Angeles Department of Public Works believes that all aspects of the project will be greatly beneficial to the residents of Los Angeles County.

Thank you for your consideration of this important project.

Very truly yours,

A handwritten signature in black ink, appearing to read "Gail Farber", with a long horizontal flourish extending to the right.

GAIL FARBER
Director of Public Works

KAZ:abc
P:\wrd\Water Conservation\GENERAL\Support Letter LACounty_TSG.doc

cc: City of Los Angeles (Mayor Antonio R. Villaraigosa)



GAIL FARBER, Director

COUNTY OF LOS ANGELES

DEPARTMENT OF PUBLIC WORKS

"To Enrich Lives Through Effective and Caring Service"

900 SOUTH FREMONT AVENUE
ALHAMBRA, CALIFORNIA 91803-1331
Telephone: (626) 458-5100
<http://dpw.lacounty.gov>

ADDRESS ALL CORRESPONDENCE TO:
P.O. BOX 1460
ALHAMBRA, CALIFORNIA 91802-1460

March 4, 2010

IN REPLY PLEASE
REFER TO FILE: **WM-5**

The Honorable Brad Sherman
House of Representatives
2242 Rayburn House Office Building
Washington, DC 20515

Dear Representative Sherman:

**LETTER OF SUPPORT
WHITNALL HIGHWAY POWER LINE EASEMENT
STORMWATER CAPTURE PILOT PROJECT**

This letter is in support of the Congressional Appropriations request submitted by the City of Los Angeles for the Whitnall Highway Power Line Easement Stormwater Capture Pilot Project.

The project is a multibenefit project identified in the Sun Valley Watershed Management Plan as a means to alleviate flooding in the Sun Valley Watershed. The project proposes utilizing an existing power line easement to establish infiltration basins for stormwater capture. In addition to reducing local flooding, the project will also recharge local groundwater supplies, augment downstream water quality, and provide passive recreational and educational facilities.

The County of Los Angeles Department of Public Works believes that all aspects of the project will be extremely beneficial to the residents of the County of Los Angeles.

Thank you for your consideration of this important project.

Very truly yours,

GAIL FARBER
Director of Public Works

ML:jtz
P:\wmpub\Secretarial\2010 Documents\Letters\Support Letter LACounty Whitnall.docx\10079

cc: City of Los Angeles (Mayor Antonio R. Villaraigosa)